

# Crossboundaries

Binke Lenhardt, Hao Dong



a **Aimer Fashion Factory**

Location  
Beijing  
Completion 2014

b **Beida Affiliated  
Highschool**

Location  
Beijing  
Completion 2016

c **Chaoyang Future School**

Location  
Beijing  
Completion 2017

d **Soyoo Joyful Growth  
Center**

Location  
Zhengzhou  
Completion 2015

Crossboundaries is a multidisciplinary, design-centered practice with projects ranging from urban planning, architecture and interior design all the way to graphic design, programming, teaching and event creation, crossing the boundaries of the design domain, initiating activities and dialogues across different fields. The office was founded in 2005 by Binke Lenhardt, born in 1971, and Hao Dong, born in 1973. The Beijing office today counts around 20 staff member. The Frankfurt office was founded in 2012 and is set up as a partnership with architect Antje Voigt, born in 1970. Over the years Crossboundaries has grown into an award-winning company known for its creative approach to educational projects as well as its ability to examine and expand the designated building programs generating added value for users and communities.



a



b



c



d

# Beisha Village Kindergarten

## Location

Nr. 8 Beisha Avenue, Beisha Village, Fu'ning County, Jiangsu, China

Building type educational  
Completion 2018

Client Education Bureau of Fu'ning County

Gross floor area 2,815 m<sup>2</sup>

A second home for left-behind children: The appropriate scale of the project was a crucial starting point of this design and led to a building cluster, with its required building volume broken down to house-like pieces, integrated by the central multi-functional open space. This integration of the outdoor and indoor is crucial to the early education environment and innate to the rural context.

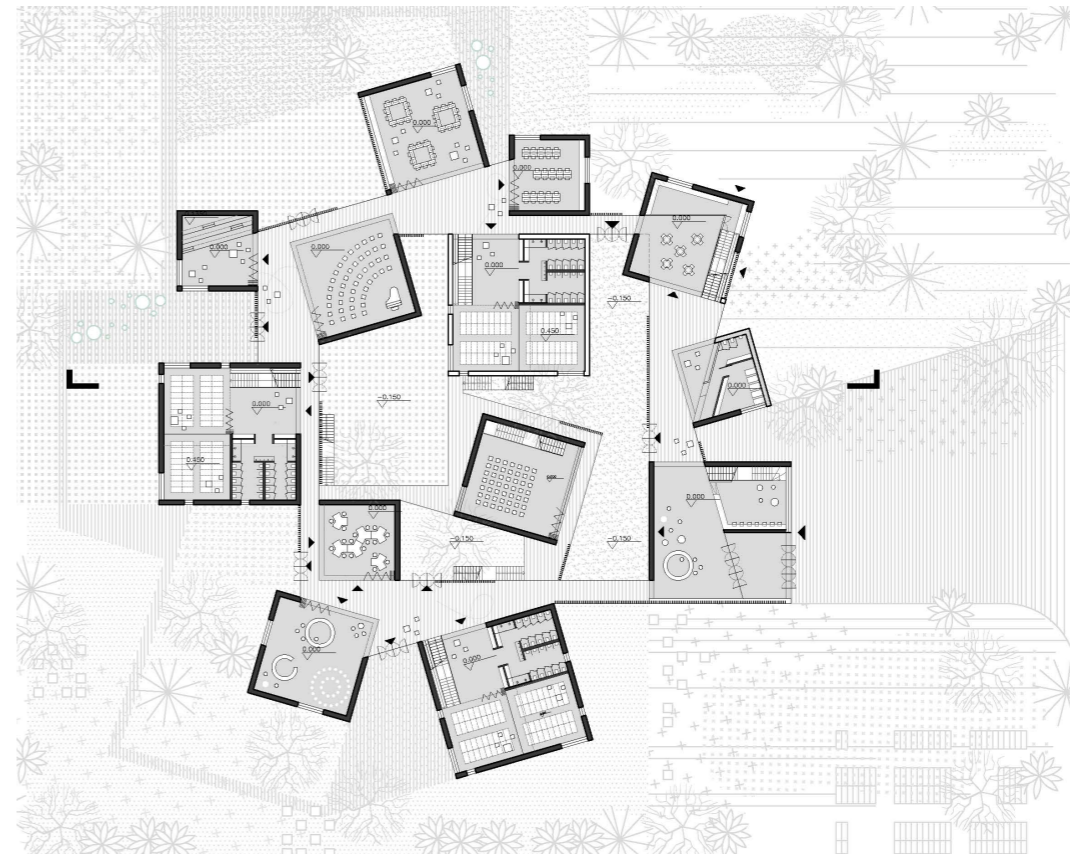
The kindergarten functions as a smaller, slightly modified version of village, of which the scale gives children a sense of familiarity and the interesting building relationships introduce novelty and encourage curiosity. Children will first discover the overall "settlement" surrounded by the trees and then, as they meander in between the "houses", they will experience small, secret places tucked away, perfect for outdoor learning activities and playing Hide-and-Seek, games children naturally play in those small villages. So this kindergarten becomes a place where children would feel familiar and free, and which they could identify as something like a second home. Considering that many young parents of rural areas seasonally migrate to big cities for work and miss out on big periods of their children growing up, this kindergarten has a great importance to them.



- a Evening view from above
- b Skylit classroom
- c Ground floor plan
- d Playing space between the roofs
- e Sketch of scale and interaction
- f Section of building cluster



a



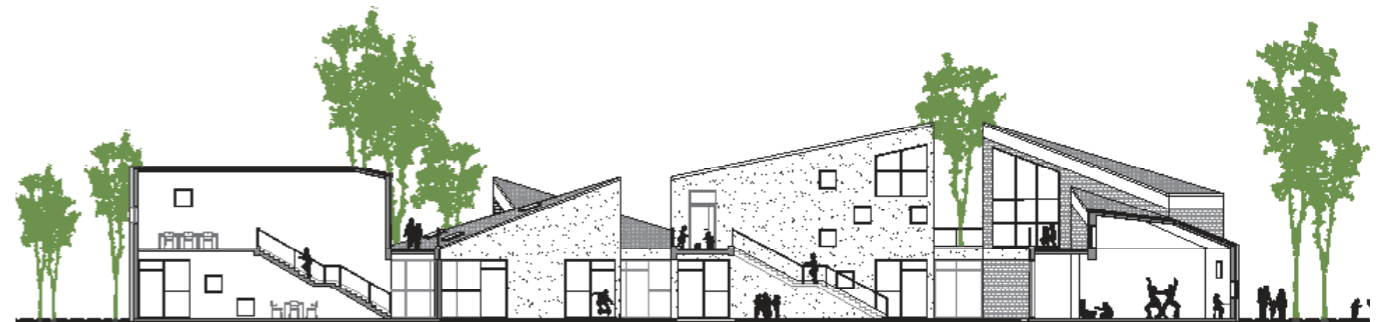
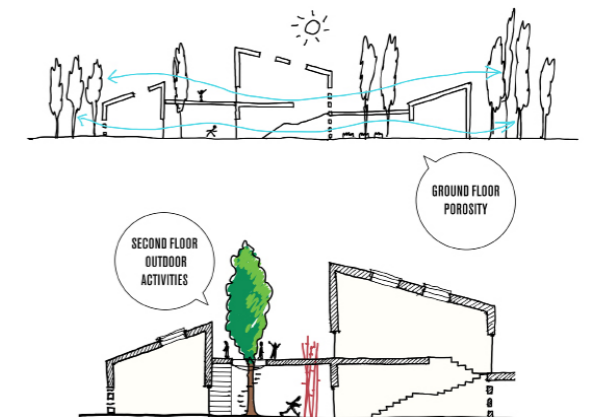
c



b



d e



f