

北京宋庄城市客厅微景观设计

SONGZHUANG MICRO COMMUNITY PARK, BEIJING

设计: Crossboundaries
地点: 北京市通州区

Design: Crossboundaries
Location: Tongzhou District, Beijing

社交客厅 Social Room © 白羽 BAI Yu

功能置换 FUNCTIONAL REALLOCATING



业主
北京宋庄投资发展有限公司

主持建筑师
蓝冰可, 董灏

设计团队
高屹, Silvia Campi, 陈鹏宇,
Marijana Simic, 于兆雄, 于泓浴,
Elena Gamez Miguelez

施工单位
北京宋庄鑫景园林绿化工程有限公司

用地面积
5,900 m²

设计周期
2020.5-2020.10

建设周期
2020.10-2021.6

摄影
白羽, 杨超英

宋庄是北京东郊的一个当地村庄, 在 20 世纪 00 年代初期以其艺术社区而闻名。与此同时, 随着年轻人向城市迁移, 导致村庄日益老龄化。留在村庄的老人担当起照顾小朋友的责任, 再加上慕名而来的艺术家, 原住民与新生群体创造了一种有趣而和谐的氛围, 每个群体都有自己对公共空间的理解与需求。

了解到需要提供一个多功能和具有包容性公共设施的宋庄政府, 委托 Crossboundaries 将毗邻小堡文化广场停车场的线性街道改造成充满活力的户外社区公园。

设计师沿 L 形地块展开设置了一系列户外“城市客厅”, 并给每个房间定义了不同的社交功能, 并由黄色的线性慢跑道蜿蜒前行, 连接了各个城市客厅。每个客厅根据不同功能设计为可时而而开放时而围合。

首先是如同前奏一般完全开放的欢迎客厅, 然后是半围合的社交客厅, 再到有着趣味游戏房的玩乐客厅, 最后是一个多功能的运动客厅, 室外空间沿着客厅不断延伸。

设计师将最初的街角改造成一个小广场, 第一个客厅开启了一个有着由角砖墙和超尺度镜面构建的半围合空间。每日清晨, 这里是太极拳和扇子舞的聚集地, 而晚上则吸引更大量的广场舞爱好者, 偶尔还会看到狗主人带着他们心爱的宠物, 沿着从这里连接“客厅”的亮黄色环路漫步。

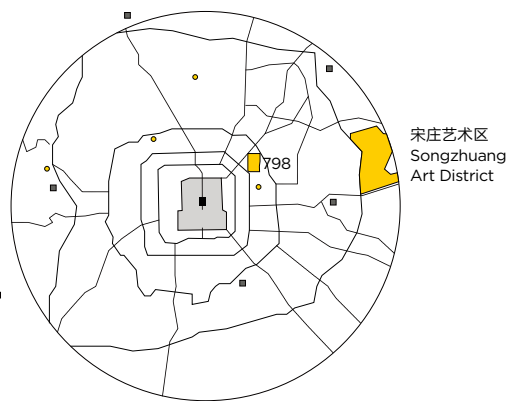
第二个客厅是一个安静的互动空间, 沿着穿插砖墙的阶梯长凳, 吸引中国象棋选手和他们的观众, 在树荫下聊天的老太太, 带着婴儿的爷爷奶奶。在周末, 年轻人会从马路对面的咖啡馆带着饮料, 来到灰色砖块和耐候钢结构前自拍。

在公园延伸的拐角处, 第三个客厅是专属儿童游戏的空间, 客厅内明亮的黄色空间, 其分层的墙壁在砖墙上

不同大小的开口, 用于躲猫猫和捉迷藏; 还设置了趣味传声筒, 通过它可以听到喊叫和唱歌, 爷爷奶奶、父母等看护人可以从远处看到在它面前玩耍的孩子们。

在公园的长方形内部, 黄色环形一直延伸到了第四个客厅, 逐渐增加的宽度, 形成一个露天健身房——绿色草地中间的运动空间。在运动器材和圆形座位之间, 居民们各得其所。

宋庄城市客厅微景观公园已经受到了周围邻里的喜爱, 它响应着不同人的需求, 有着设计的包容性, 尤其是各种色彩鲜艳的城市客厅空间, 形成了一个融合着各个年龄段人群的共同体——创造更新生活的同时满足居民私人空间与公共空间的平衡。



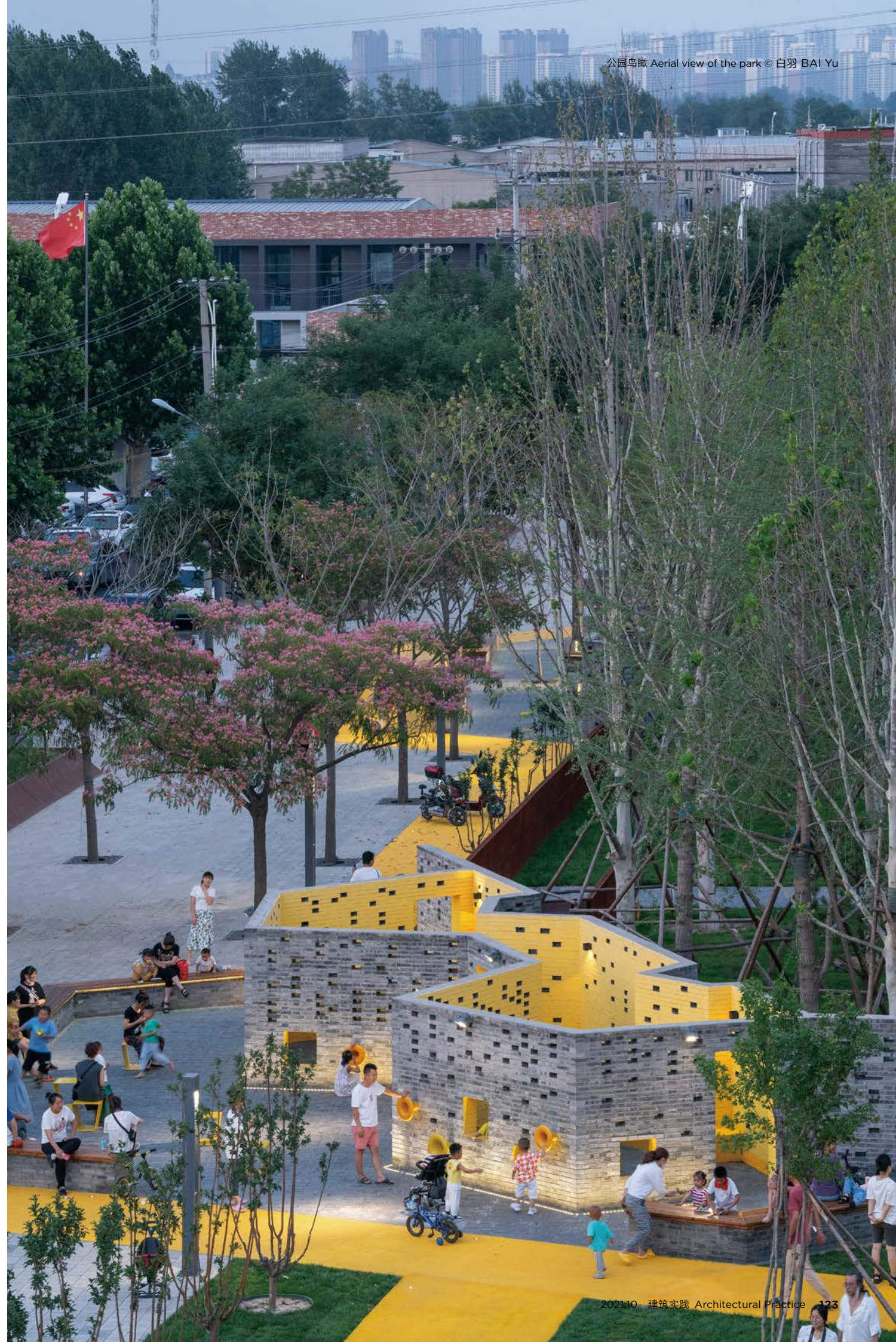
- 艺术村 (始于 90 年代) Developing art villages (since 1990s)
- 近郊区 Periphery districts

场地区位 Site location



改造前后对比图 Before and after the renovation © 白羽 BAI Yu

改造前后对比图 Before and after the renovation © 杨超英 YANG Chaoying



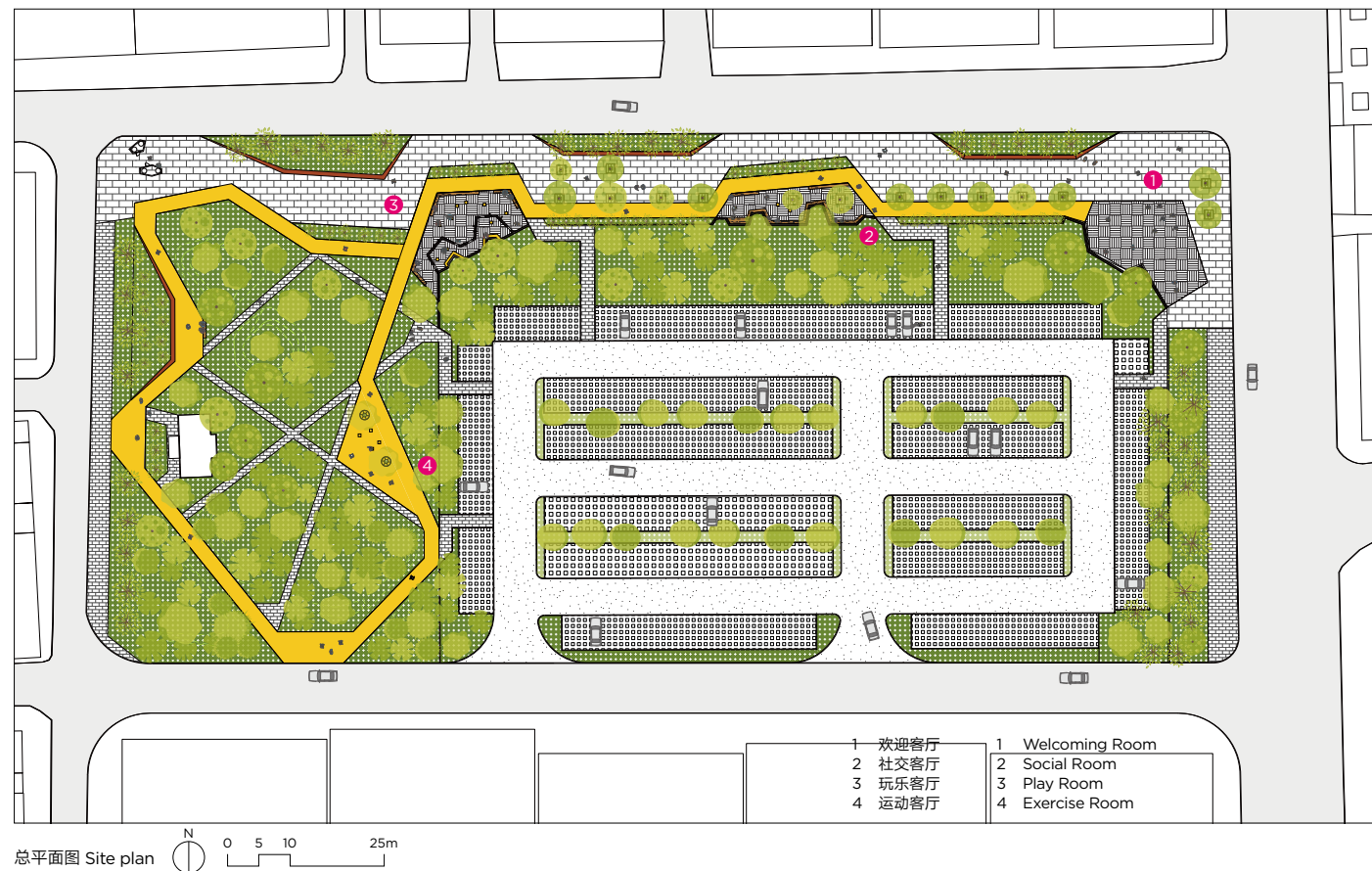
公园鸟瞰 Aerial view of the park © 白羽 BAI Yu



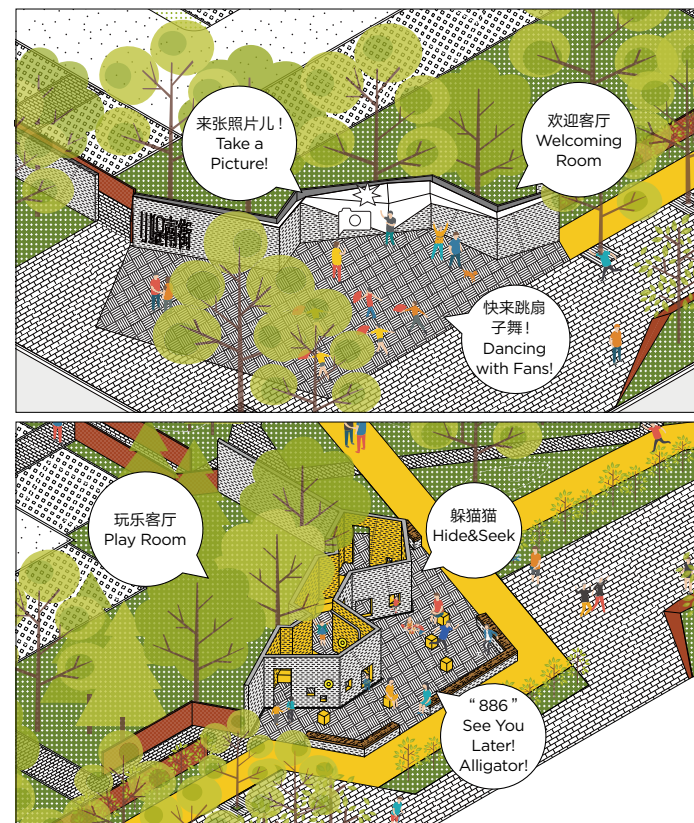
玩乐客厅外部 Exterior of Play Room ©白羽 BAI Yu



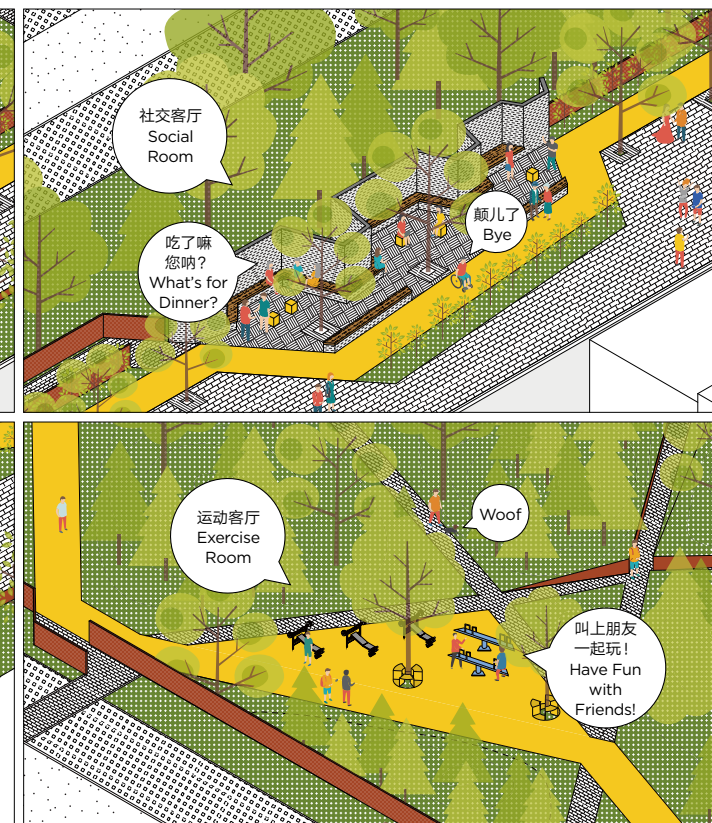
玩乐客厅内部 Interior of Play Room ©白羽 BAI Yu



总平面图 Site plan 0 5 10 25m



1. 欢迎客厅示意图 Welcoming Room diagram
3. 玩乐客厅示意图 Play Room diagram



2. 社交客厅示意图 Social Room diagram
4. 运动客厅示意图 Exercise Room diagram

1 | 2
3 | 4



欢迎客厅互动镜面
Interactive mirror of Welcoming Room © 白羽 BAI Yu



剖面图 Section 0 1 2 5m

CLIENT
Beijing Songzhuang Investment Development Co., Ltd.

CHIEF ARCHITECTS
Binke Lenhardt, DONG Hao

DESIGN TEAM
GAO Yang, Silvia Campi, CHEN Pengyu, Marijana Simic, Sean Yu, YU Hongyu, Elena Gamez Miguez

CONSTRUCTION COMPANY
Beijing Songzhuang Xinjing Landscape Engineering Co., Ltd.

SITE AREA
5,900 m²

DESIGN PERIOD
2020.5–2020.10

CONSTRUCTION PERIOD
2020.10–2021.6

PHOTOGRAPHY
BAI Yu, YANG Chaoying

Songzhuang, a local village in Beijing's eastern suburbs, became famous for its art community in the early 2000s. At the same time, urban migration of younger people resulted in an increasingly aging village population left in charge to look after the youngest, oddly combined with local art visitors, each with their own needs for and within public spaces.

Understanding the challenge of offering versatile and inclusive communal facilities, the Songzhuang government has commissioned Crossboundaries to regenerate a linear streetscape adjacent to a parking lot, close to the Xiaopu Cultural Plaza into a lively outdoor community park.

The L-shaped plot features a series of outdoor "rooms"—spaces, whose designs trigger but do not limit certain uses—along a yellow linear loop track, a connecting element meandering between street side pavement and the park at a pocket of the site. These rooms offer different levels of enclosure and boundary following a sequence.

From completely open, forming a plaza like a prelude to a slightly more defined area with a semi-transparent grey backing wall (as separate elements to the parking lot) to a fully enclosed one, but open to the sky and finally one within the new park zone, where only the ground surface marking its expanse.

Transforming the initial street corner into a small plaza, the first room opens up a semicircular space defined by its surrounding angular brick walls in combination with large mirror surfaces. In the morning, Tai Chi and fan dance are performed, while the

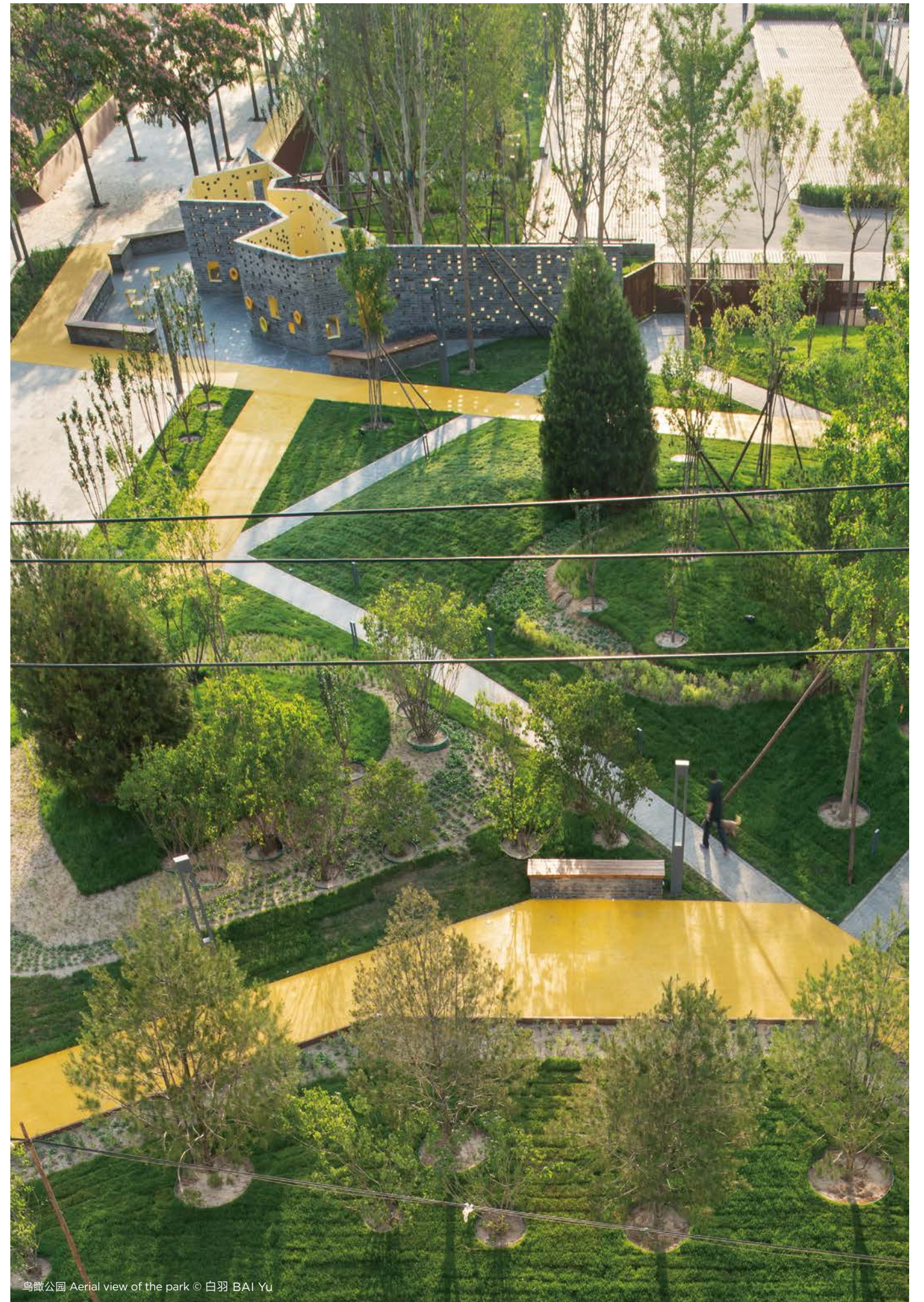
evening attracts groups of more rhythmic dancers. The occasional dog owner with his beloved pet is seen along the bright yellow asphalt of the loop starting from here connecting the rooms.

The second room is one of tranquil interaction: long benches along the stepping profiles of interspersed brick walls invite Chinese chess players and their audience, chatting groups of elderly ladies in the shadow of the trees, grandparents with babies. On the weekends, younger people bring drinks from the cafes across the road to take selfies in front of the gray brick and layered perforated corten steel backdrop.

On the corner to the extending park, the third room is all about children's play: a bright yellow room within a room, layered walls with differently sized openings in the brick walls for peek-a-boo and hide-and-seek, and with connecting speaking tubes through which shouting and singing can be heard. In front of it, grandparents, parents and other caretakers can watch the children play from a distance.

Inside the rectangle of the park, the yellow loop track itself spans up the fourth room, increasing in width to become an open-air gym, a sport space in the middle of green meadows. Between the sports equipment and the circular seating, all community members find their own place.

The park has proven a great success with the local population, its variety of inviting, bright spaces adopted and occupied instantly—a true example for integration and interaction of all age groups.



鸟瞰公园 Aerial view of the park © 白羽 BAI Yu